

emaar-india.com



GREAT
COMMUNITIES
ARE CREATED
OFFLINE
BE A PART
OF OURS

PRESENTING

EMAAR

PALM

PREMIER



NEW TOWERS IN THE MIDST OF
A MEGA EMAAR COMMUNITY AT PALM HILLS,
SECTOR 77, GURUGRAM.

PRESENTING 3BHK + LOUNGE + UTILITY



GRAND VIEW

ARTISTIC IMPRESSION



CLUBHOUSE

ARTISTIC IMPRESSION

HIGHLIGHTS



MODERN CLUBHOUSE

- Reception Lounge
- Multi-Purpose Hall
- Restaurant
- Business Centre
- Kids' Room
- Gymnasium
- Wellness Zone
- Steam-Sauna Treatment Room
- Party And Yoga Terrace
- Terrace Garden
- Swimming Pool
- Kids' Pool
- Pool Deck



PLAY COURTS

- Tennis And Badminton Court
- Half Basketball Court
- Kids' Play Area



OTHER ADVANTAGES

- Secured Gated Community
- Nursery and Primary School
- Excellent Connectivity
- Multiple Lawns

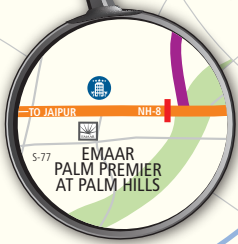
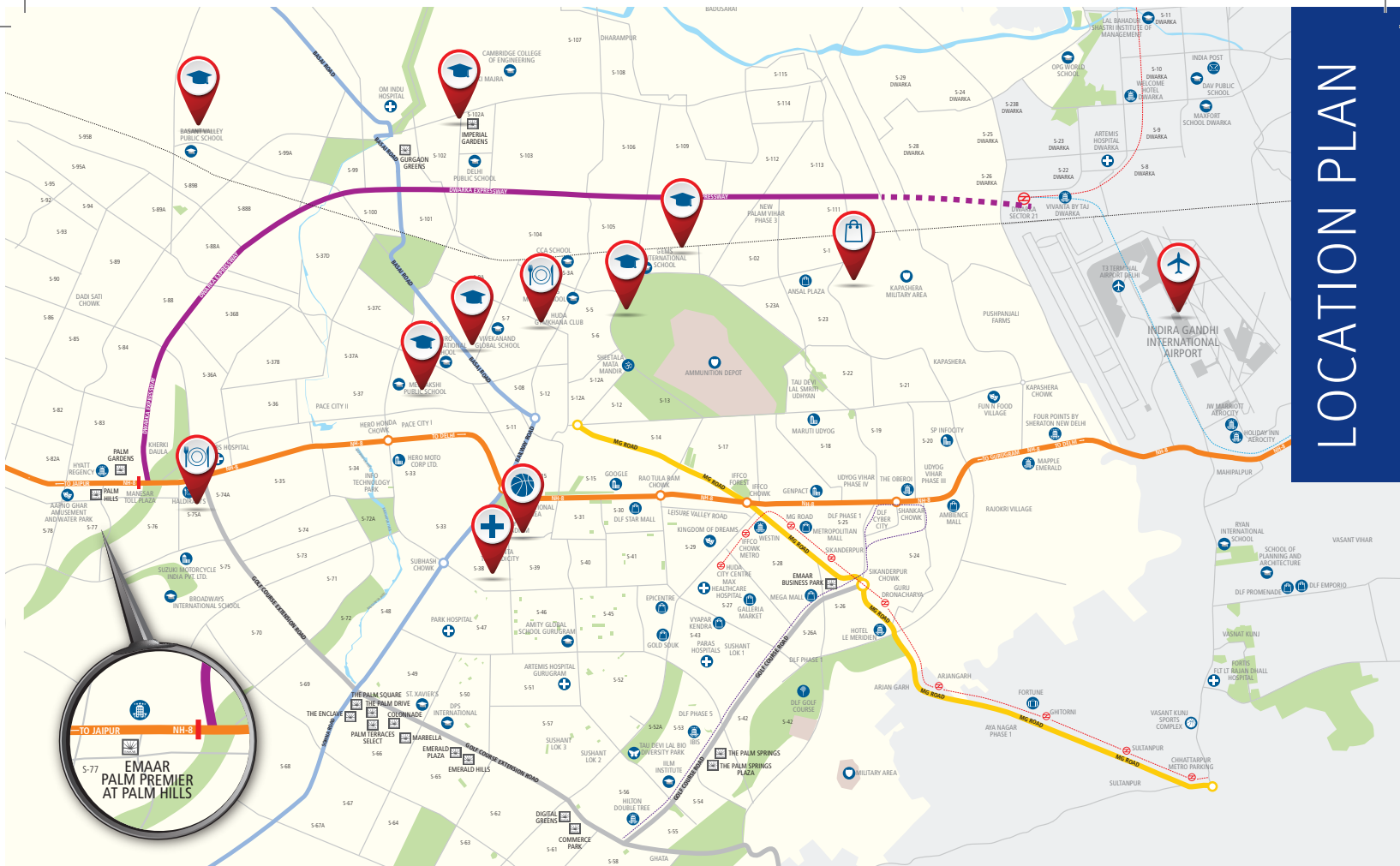


LOCATION ADVANTAGE

- Strategically Located On The Artery Of National Highway
- Bustling Neighbourhood
- Lively Eco-System



LOCATION PLAN



- SCHOOL/ COLLEGE
 - AIRPORT
 - HOSPITAL
 - HOTEL
 - OFFICE
 - ENTERTAINMENT ZONE
 - SHOPPING MALL
 - SPECIAL ECONOMIC ZONE (SEZ)
 - POST OFFICE
 - SPORTS COMPLEX
 - GOLF COURSE
 - DEFENCE AREA
 - CLUB/ FOOD COURT
 - BIO DIVERSITY PARK
 - TEMPLE
- DELHI METRO
 --- RAPID METRO
 --- AIRPORT METRO
 --- RAILWAY LINE

Map not to scale

Legend

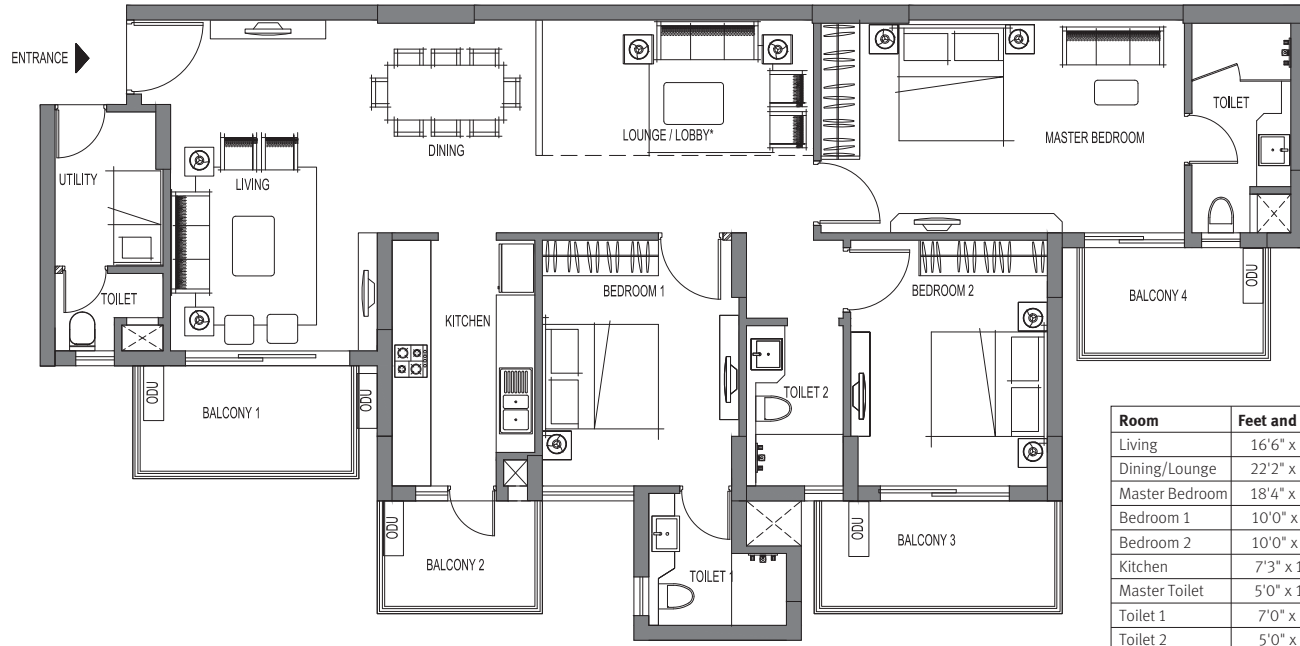
1. Entrance Plaza
2. Clubhouse
3. Swimming Pool
4. Convenient Shopping
5. Basketball Court
6. Badminton Court
7. Tennis Court
8. Kids' Play Area
9. Lawn
10. Nursery School
11. Primary School
12. Multi-Level Car Parking
13. ESS
14. HSD Yard



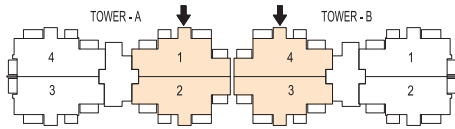
MASTER PLAN

Typical Floor, Tower A and B - 3 Bedroom | 3 Toilet | Lounge | Utility

Carpet Area: 113.158 sq. mtr. (1,218.03 sq.ft.) | Balcony Area: 22.581 sq. mtr. (243.06 sq.ft.) | Super Area: 185.80 sq. mtr. (2,000 sq.ft.)

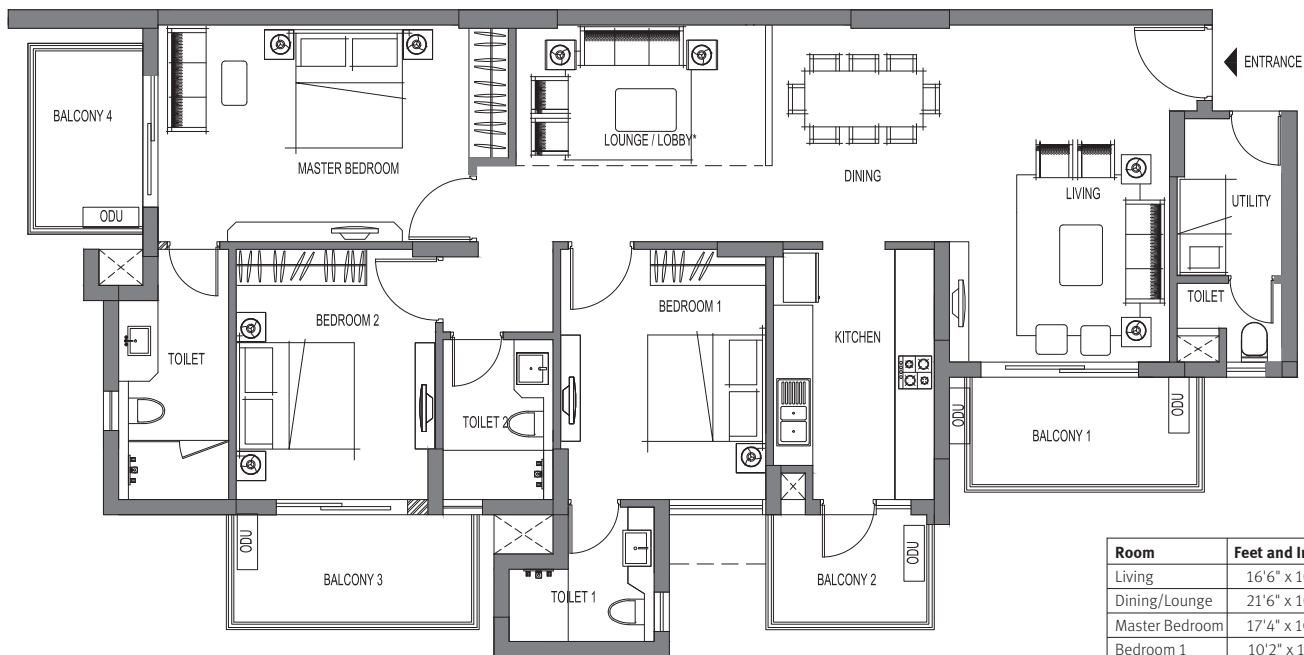


Room	Feet and Inches
Living	16'6" x 10'5"
Dining/Lounge	22'2" x 10'6"
Master Bedroom	18'4" x 10'6"
Bedroom 1	10'0" x 12'5"
Bedroom 2	10'0" x 12'5"
Kitchen	7'3" x 12'5"
Master Toilet	5'0" x 10'6"
Toilet 1	7'0" x 6'6"
Toilet 2	5'0" x 8'1"
Utility	5'4" x 7'6"
Utility Toilet	5'4" x 4'0"
Balcony 1	11'4" x 5'6"
Balcony 2	8'3" x 5'6"
Balcony 3	12'6" x 5'6"
Balcony 4	9'7" x 5'6"

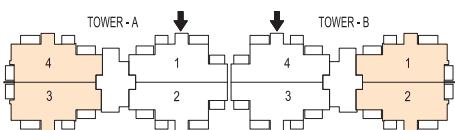


Typical Floor, Tower A and B - 3 Bedroom | 3 Toilet | Lounge | Utility

Carpet Area: 115.41 sq. mtr. (1,242.27 sq.ft.) | Balcony Area: 22.677 sq. mtr. (244.09 sq.ft.) | Super Area: 188.12 sq. mtr. (2,025 sq.ft.)

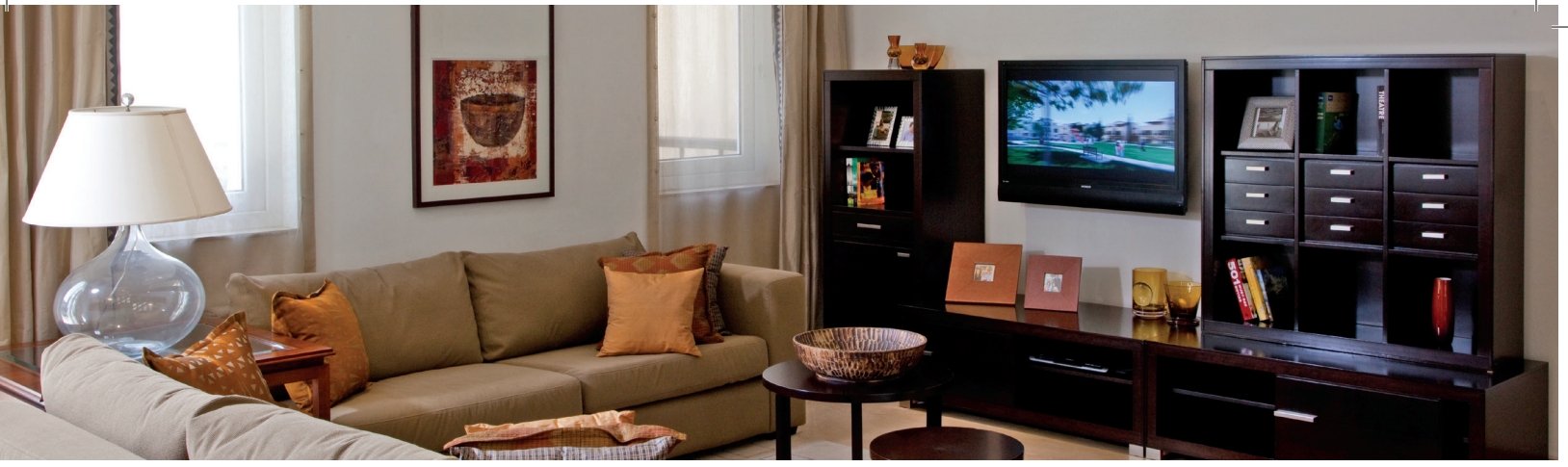


Room	Feet and Inches
Living	16'6" x 10'8"
Dining/Lounge	21'6" x 10'6"
Master Bedroom	17'4" x 10'6"
Bedroom 1	10'2" x 12'5"
Bedroom 2	10'0" x 12'5"
Kitchen	8'1" x 12'5"
Master Toilet	5'4" x 12'5"
Toilet 1	7'2" x 6'6"
Toilet 2	5'0" x 7'8"
Utility	5'3" x 7'6"
Utility Toilet	5'3" x 4'0"
Balcony 1	12'0" x 5'6"
Balcony 2	8'3" x 5'6"
Balcony 3	12'6" x 5'6"
Balcony 4	5'6" x 9'5"



FLOOR PLANS

*Space to be used as per unit holder requirement. In the interest of maintaining high standards, all floor plans, layout plans, areas, dimensions and specifications mentioned are for reference and may change in compliance accordance with law. Soft furnishing, cupboards, kitchen cabinets, furniture and gadgets are not part of the offering. All dimensions are from Masonry to Masonry. 1 sq. mtr. = 1.196 sq. yds. & 1 sq. mtr. = 10.764 sq. ft.



LIVING ROOM/DINING/LOBBY

- Oil Bound Distemper (Walls)
- Oil Bound Distemper (Ceiling)
- High Quality Vitrified Tiles In Marble Finish (Flooring)
- External Windows - UPVC
- Entrance Door - Seasoned Hardwood Frames With European Style Moulded Shutter
- Internal Door - Seasoned Hardwood Frames With Flush Shutters/Moulded Skin Door
- External Doors - UPVC
- Modular Switches
- Split AC - 1.5 Ton

MASTER BEDROOM

- Oil Bound Distemper (Walls)
- Oil Bound Distemper (Ceiling)
- Laminated Wooden Flooring
- External Windows - UPVC
- Internal Door - Seasoned Hardwood Frames With Flush Shutters/Moulded Skin Door
- External Doors - UPVC
- Modular Switches
- Split AC - 1.5 Ton

MASTER TOILET

- Combination Of Vitrified Tiles And Oil Bound Distemper (Walls)
- Oil Bound Distemper (Ceiling)
- Vitrified Tile (Flooring)
- External Windows - UPVC
- Internal Door - Seasoned Hardwood Frames With Flush Shutters/Moulded Skin Door
- High Quality CP Fittings And Chinaware Fixtures
- Modular Switches
- Shower Cubical With Openable Door
- Granite Stone Counter

KITCHEN

- Combination Of Tiles And Oil Bound Distemper (Walls)
- Oil Bound Distemper (Ceiling)
- High Quality Vitrified Tiles In Marble Finish (Flooring)
- External Windows - UPVC
- Internal Door - Seasoned Hardwood Frames With Flush Shutters/Moulded Skin Door
- External Doors - UPVC
- Granite Counter Top, Stainless Steel Single Drain Board Sink With CP Fittings
- Modular Switches
- Integrated Modular Kitchen (Upper + Lower Cabinet) + Chimney + Hob + Geysers

OTHER BEDROOM(S)

- Oil Bound Distemper (Walls)
- Oil Bound Distemper (Ceiling)
- Laminated Wooden Flooring
- External Windows - UPVC
- Internal Door - Seasoned Hardwood Frames With Flush Shutters/Moulded Skin Door
- External Doors - UPVC
- Modular Switches
- Split AC - 1.5 Ton

OTHER TOILETS

- Combination Of Vitrified Tiles And Oil Bound Distemper (Walls)
- Oil Bound Distemper (Ceiling)
- Vitrified Tile Matt Finish (Flooring)
- External Windows - UPVC
- Internal Door - Seasoned Hardwood Frames With Flush Shutters/Moulded Skin Door
- High Quality CP Fittings And China Ware Fixtures
- Modular Switches
- Granite Stone Counters

BALCONIES AND TERRACES

- Weather Proof Paint (Walls)
- Weather Proof Paint (Ceiling)
- Anti Skid Tiles (Flooring)
- External Windows - UPVC
- External Doors - UPVC

UTILITY ROOM

- Oil Bound Distemper (Walls)
- Oil Bound Distemper (Ceiling)
- Ceramic Tiles (Flooring)
- Internal Door - Flush Shutters/Moulded Skin Door

OTHER AMENITIES

- Minimum One Reserved Car Park (Open)
- Generator Back-up Of 5 Kva Per Apartment
- Central Green Having Kids Play Area With Tot-lots, Seesaws And Slides
- Centralised Sewage Treatment Plant Perimeter Security

In the interest of maintaining high standards, all floor plans, layout plans, areas, dimensions and specifications mentioned are for reference and may change in compliance accordance with law. Soft furnishing, cupboards, kitchen cabinets, furniture and gadgets are not part of the offering. All dimensions are from Masonry to Masonry. 1 sq. mtr. = 1.196 sq. yds. & 1 sq. mtr. = 10.764 sq. ft.



emaar-india.com